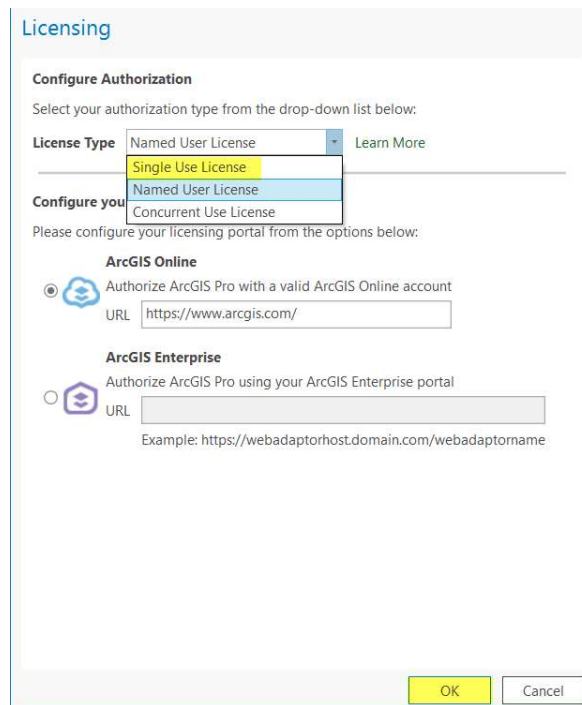
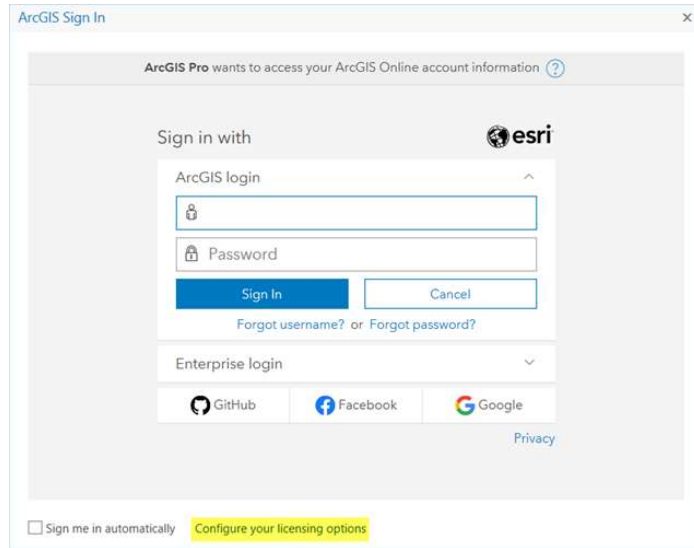




Authorise ArcGIS Pro Single Use Licenses Using a Provision File

Open your ArcGIS Pro program and at the sign in page choose the "Configure License Options" button at the bottom of the page, then from the drop down choose "Single Use" and choose "OK".



Choose your license level and select the "Authorize" button.

Licensing

Configure Authorization
Select your authorization type from the drop-down list below:

License Type: **Single Use License** [Learn More](#)

License Level
Select the Pro core product license level below:

Advanced Standard Basic

This lists the software installed, along with its authorization status and expiration date.

Name	Licensed	Expires
ArcGIS Pro Advanced	No	N/A
3D Analyst	No	N/A
Aviation Airports	No	N/A
Aviation Charting	No	N/A
Business Analyst	No	N/A
Data Interoperability	No	N/A
Data Reviewer	No	N/A
Defense Mapping	No	N/A
Geostatistical Analyst	No	N/A
Image Analyst	No	N/A
LocateXT	No	N/A
Location Referencing	No	N/A

Buttons: **Authorize** Deauthorize Refresh Machine ID OK Cancel

Select the option "I have received an authorization file and am now ready to finish the authorisation process", browse to your license file and then click "Next".

Software Authorization Wizard

Authorization Options
You must authorize the software prior to use. Select from the options below.

Authorization Options

I have installed my software and need to authorize it.

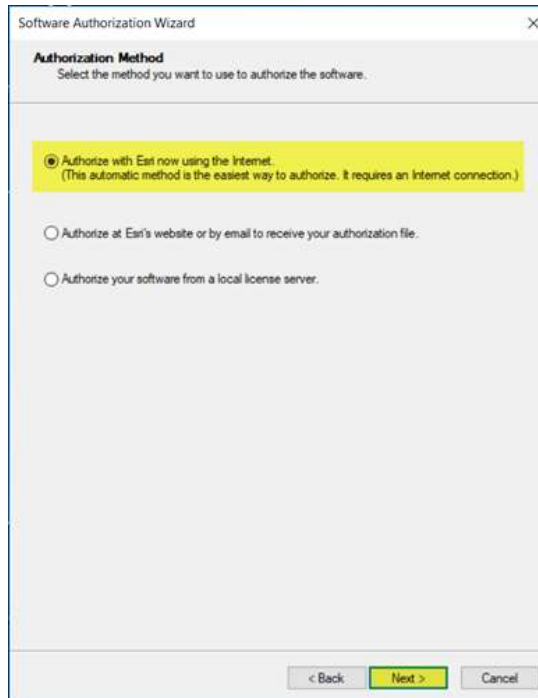
I have already authorized the software and need to authorize additional extensions.

I have received an authorization file and am now ready to finish the authorization process.

C:\Users\██████\Desktop\DemoArcGISProAdvanced_Singl **Browse...**

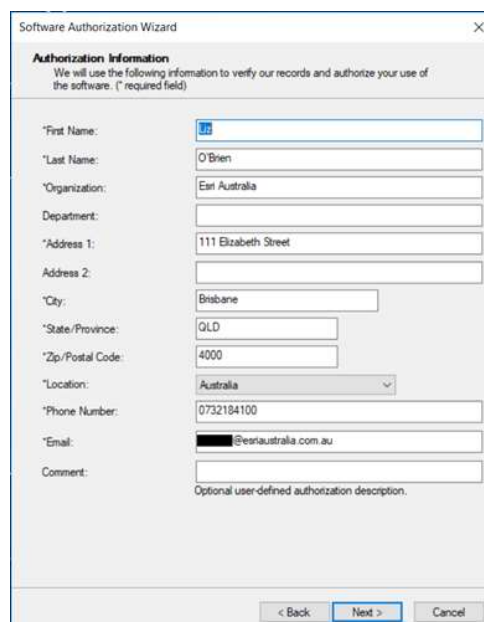
< Back **Next >** Cancel

Choose the method you wish to use to authorise your software (i.e. using the internet) and click "Next".



The screenshot shows the 'Software Authorization Wizard' window. The title bar reads 'Software Authorization Wizard' with a close button. The main heading is 'Authorization Method' with the instruction 'Select the method you want to use to authorize the software.' There are three radio button options: 1. 'Authorize with Esri now using the Internet. (This automatic method is the easiest way to authorize. It requires an Internet connection.)' - This option is selected and highlighted with a yellow background. 2. 'Authorize at Esri's website or by email to receive your authorization file.' 3. 'Authorize your software from a local license server.' At the bottom, there are three buttons: '< Back', 'Next >' (highlighted in yellow), and 'Cancel'.

Fill in the personal information pages that follow and then click "Next".



The screenshot shows the 'Software Authorization Wizard' window at the 'Authorization Information' step. The title bar reads 'Software Authorization Wizard' with a close button. The main heading is 'Authorization Information' with the instruction 'We will use the following information to verify our records and authorize your use of the software. (* required field)'. The form contains the following fields: *First Name: [Empty] *Last Name: O'Brien *Organization: Esri Australia Department: [Empty] *Address 1: 111 Elizabeth Street Address 2: [Empty] *City: Brisbane *State/Province: QLD *Zip/Postal Code: 4000 *Location: Australia (dropdown menu) *Phone Number: 0732184100 *Email: [Redacted]@esriaustralia.com.au Comment: [Empty] Optional user-defined authorization description. At the bottom, there are three buttons: '< Back', 'Next >' (highlighted in blue), and 'Cancel'.

Software Authorization Wizard

Authorization information (continued)
We will use the following information to verify our records and authorize your use of the software. (*) required field

Your Organization: Commercial/Private Business
Your Industry: GIS Services
Yourself: GIS Analyst

The personal information you supplied is protected under Esri's privacy policy. If you want to view Esri's privacy policy, click the View button below.

View...

< Back Next > Cancel

Your license code will be pre-populated from the provision file, so check this and then select the "Next" button.

Software Authorization Wizard

Software Authorization Number
Enter the authorization number for your software product.

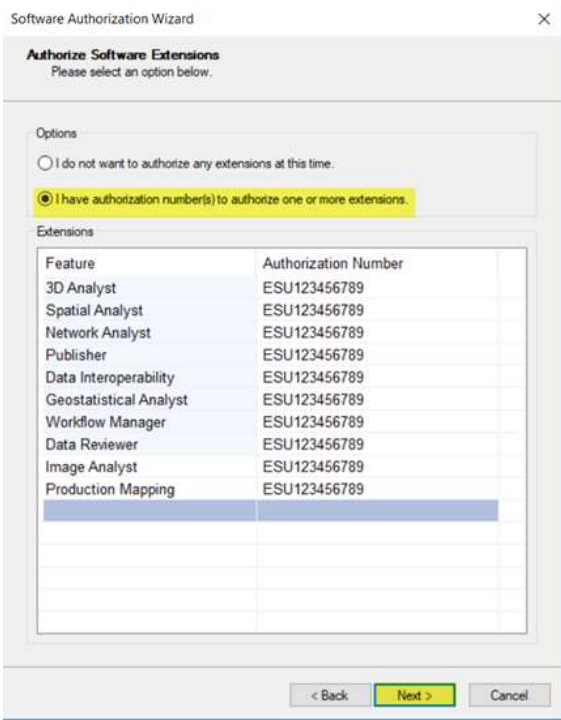
The authorization number consists of three letters and a series of numbers; similar to ABC123456789.

ArcGIS Desktop Advanced (Single Use)
ESUG

< Back Next > Cancel

If you have included extensions in your license file, the fields will also be pre-populated.

Select the "Next" button.



Your software authorisation wizard will connect to My Esri and complete the process. Choose the "Finish" button when complete.

