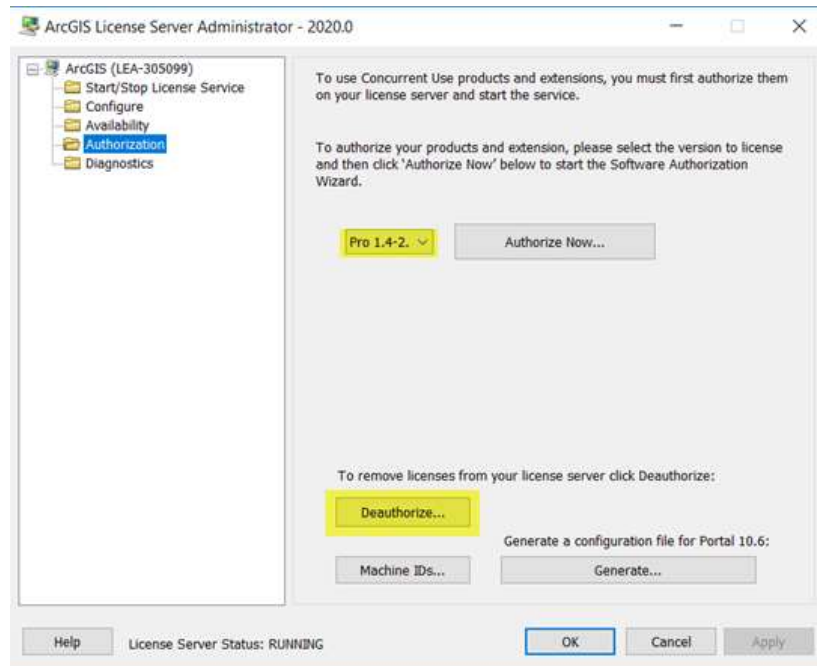


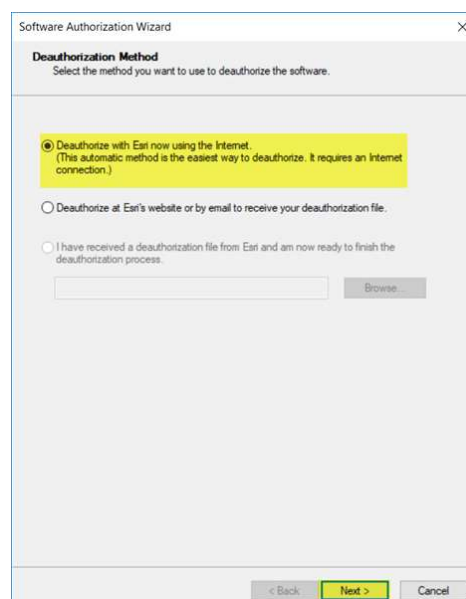


De-authorise ArcGIS Pro Concurrent Use Licenses Online

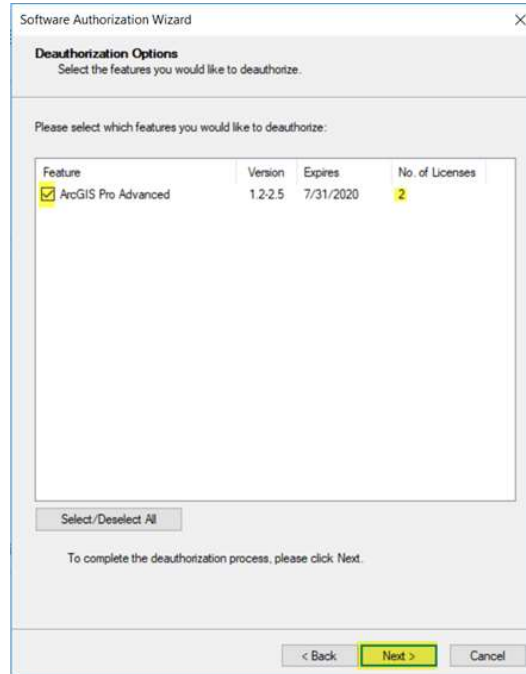
Open your ArcGIS License Server Administrator and ensure that any borrowed or checked out licenses are returned via the Availability folder. Then navigate to the Authorisation folder and select ArcGIS Pro 1.4 - 2.6 from the drop-down menu and then select the "De-authorise" button.



Select the option "De-authorise with Esri's now using the internet" from the panel outlined below, then click "Next".



Select the feature that you wish to de-authorise and specify the number of licenses to be removed and then choose "Next".



Your machine will connect to My Esri using the internet and de-authorise the license.

You will receive confirmation and will need to hit the "Finish" button at the end.

