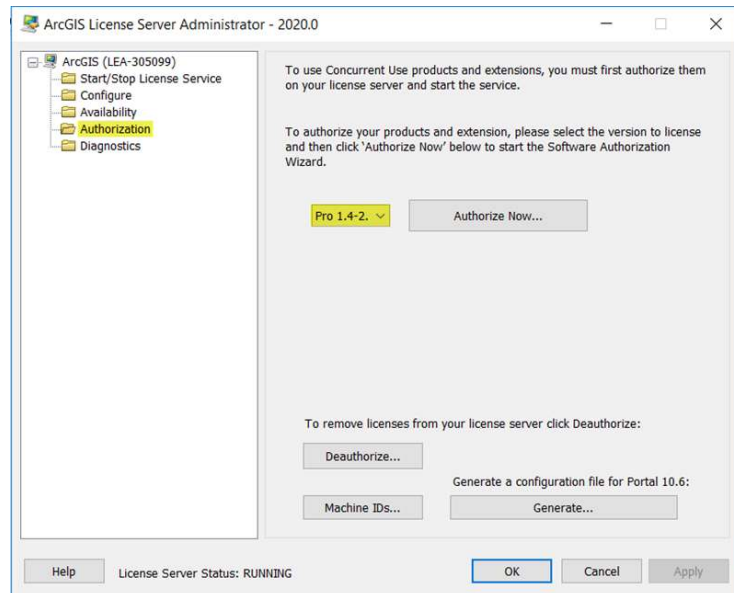


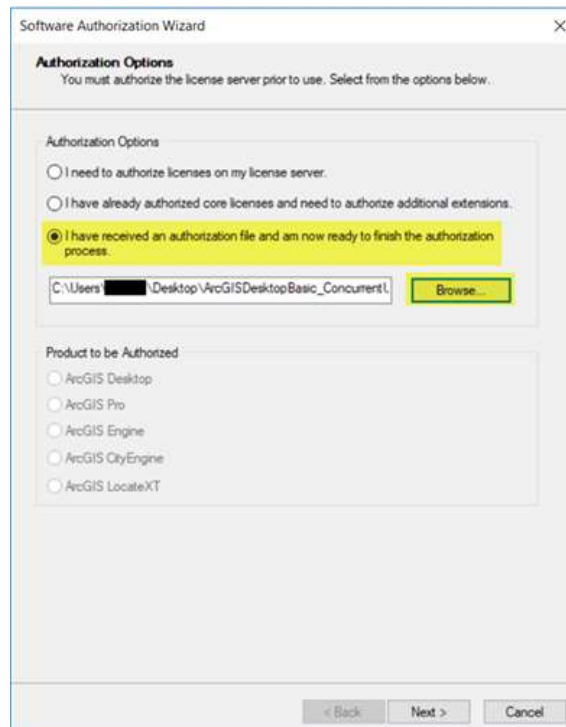


Authorise ArcGIS Pro Concurrent Use Licenses Using a Provision File

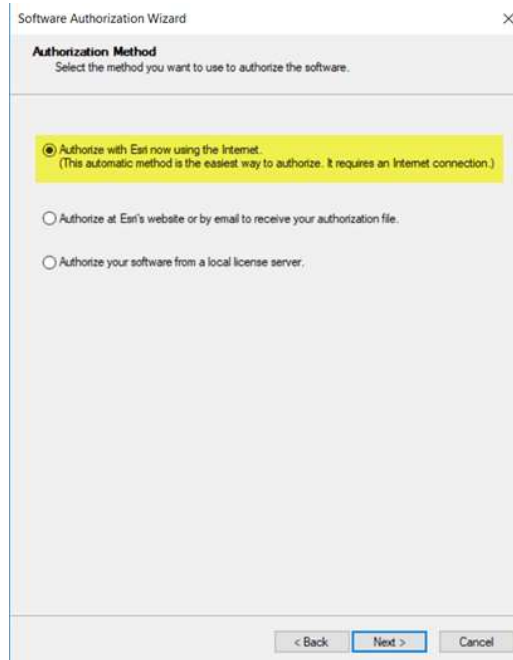
Open your ArcGIS License Server Administrator, navigate to the Authorisation folder and select ArcGIS Pro 1.4 - 2.6 from the drop-down menu and then select the "Authorise Now button".



Select the option "I received an authorisation file and am now ready to finish the authorisation process" and browse to your provision file, as outlined in the below panel, then click "Next".

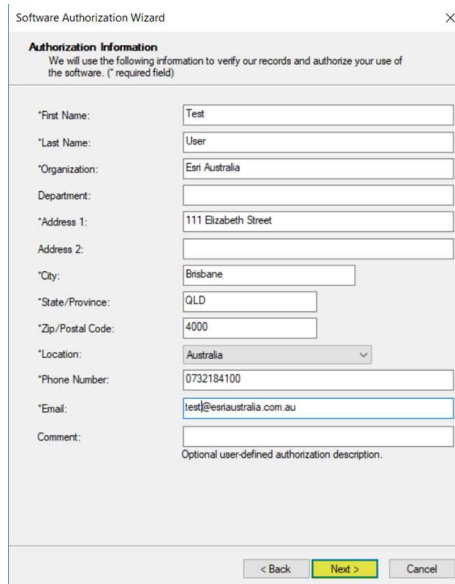


For the authorisation method choose "Authorize with Esri using the Internet" and choose "Next".



The screenshot shows the 'Authorization Method' step of the Software Authorization Wizard. The title bar reads 'Software Authorization Wizard'. The main heading is 'Authorization Method' with the instruction 'Select the method you want to use to authorize the software.' There are three radio button options: 1. 'Authorize with Esri now using the Internet.' (This option is selected and highlighted in yellow, with a sub-note: '(This automatic method is the easiest way to authorize. It requires an Internet connection.)') 2. 'Authorize at Esri's website or by email to receive your authorization file.' 3. 'Authorize your software from a local license server.' At the bottom, there are three buttons: '< Back', 'Next >', and 'Cancel'.

Complete the required fields with your personal information and your organisation details on the two the following page (these will be marked with an asterisk) and the choose "Next".



The screenshot shows the 'Authorization Information' step of the Software Authorization Wizard. The title bar reads 'Software Authorization Wizard'. The main heading is 'Authorization Information' with the instruction 'We will use the following information to verify our records and authorize your use of the software. (* required field)'. The form contains the following fields: *First Name: Test; *Last Name: User; *Organization: Esri Australia; Department: (empty); *Address 1: 111 Elizabeth Street; Address 2: (empty); *City: Brisbane; *State/Province: QLD; *Zip/Postal Code: 4000; *Location: Australia (dropdown menu); *Phone Number: 0732184100; *Email: test@esriaustralia.com.au; Comment: (empty). Below the comment field is the text 'Optional user-defined authorization description.' At the bottom, there are three buttons: '< Back', 'Next >', and 'Cancel'.

Software Authorization Wizard

Authorization information (continued)
We will use the following information to verify our records and authorize your use of the software. (* required field)

*Your Organization: Commercial/Private Business

*Your Industry: GIS Services

*Yourself: Analyst/Researcher/Specialist

The personal information you supplied is protected under Esri's privacy policy. If you want to view Esri's privacy policy, click the View button below.

View...

< Back Next > Cancel

The appropriate fields will be pre-populated with your authorisation codes and the number of licenses that you wish to authorise, confirm these are correct and click "Next".

Software Authorization Wizard

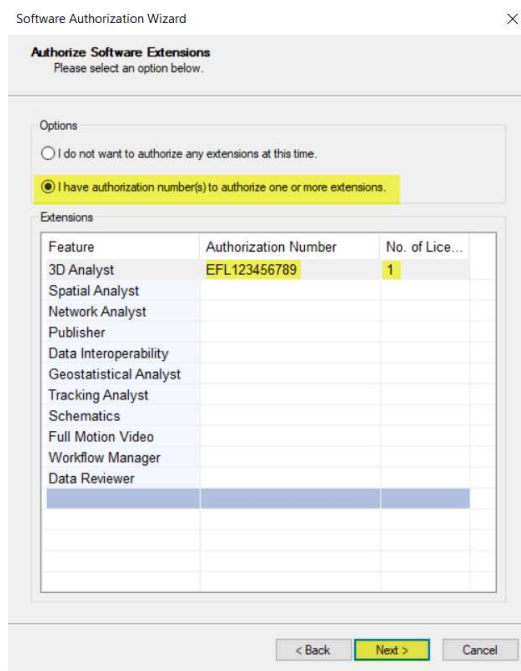
Software Authorization Number
Enter the authorization number for your software product.

The authorization number consists of three letters and a series of numbers; similar to ABC123456789.

ArcGIS Desktop Advanced	No. of Licenses
EFL123456789	2

< Back Next > Cancel

In the software extensions panel choose the appropriate options based on whether you have extensions to authorise or not. If you do have extensions, apply the license code and number of licenses in the fields provided and choose "Next".



You will receive notification that the authorisation has completed and will list the features authorised. Click the "Finish" button to re-read the licenses.

