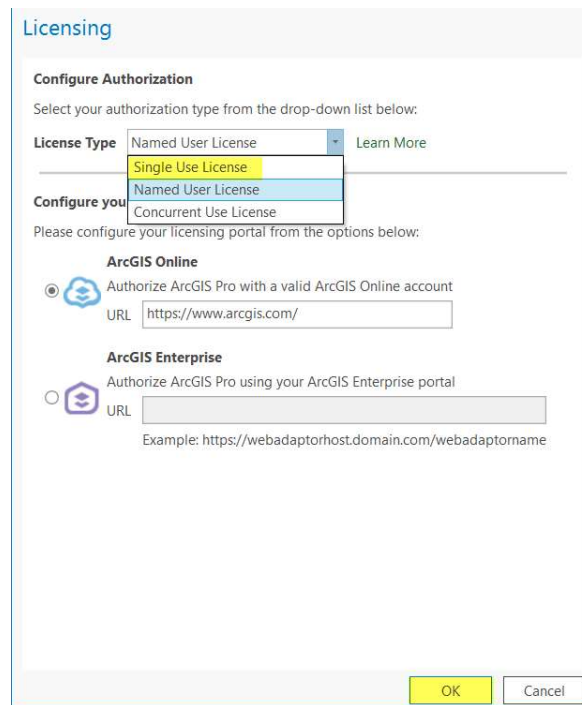
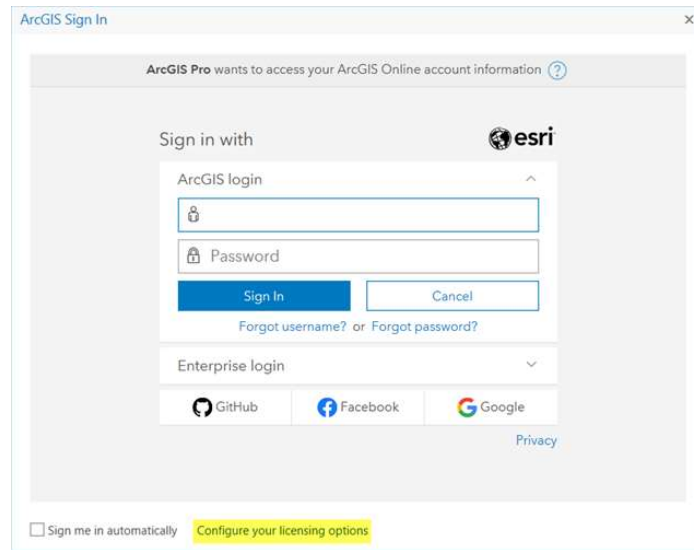




Authorise ArcGIS Pro Single Use Licenses Online

Open your ArcGIS Pro program and at the sign in page and choose the Configure License Options button at the bottom of the page, then from the drop down choose "Single Use" and choose "OK".



Choose your license level and select the "Authorize" button.

Licensing

Configure Authorization
Select your authorization type from the drop-down list below:

License Type: **Single Use License** [Learn More](#)

License Level
Select the Pro core product license level below:

Advanced Standard Basic

This lists the software installed, along with its authorization status and expiration date.

Name	Licensed	Expires
ArcGIS Pro Advanced	No	N/A
3D Analyst	No	N/A
Aviation Airports	No	N/A
Aviation Charting	No	N/A
Business Analyst	No	N/A
Data Interoperability	No	N/A
Data Reviewer	No	N/A
Defense Mapping	No	N/A
Geostatistical Analyst	No	N/A
Image Analyst	No	N/A
LocateXT	No	N/A
Location Referencing	No	N/A

Buttons: **Authorize** Deauthorize Refresh Machine ID OK Cancel

Select the option "I have installed my software and need to authorise it" and "ArcGIS Pro" from the panels as outlined below, then click "Next".

Software Authorization Wizard

Authorization Options
You must authorize the software prior to use. Select from the options below.

Authorization Options

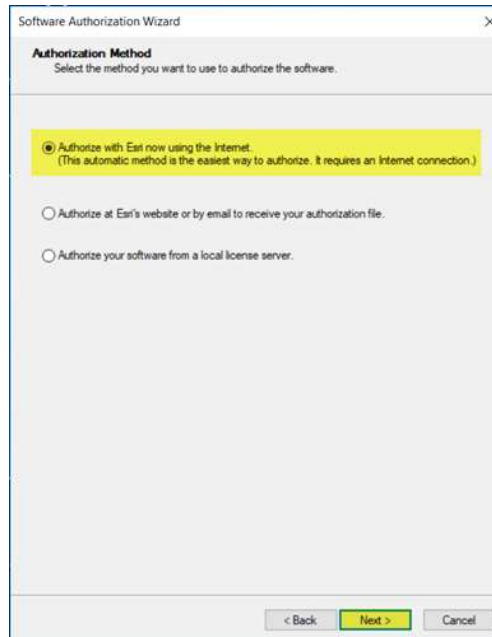
I have installed my software and need to authorize it.

I have already authorized the software and need to authorize additional extensions.

I have received an authorization file and am now ready to finish the authorization process.

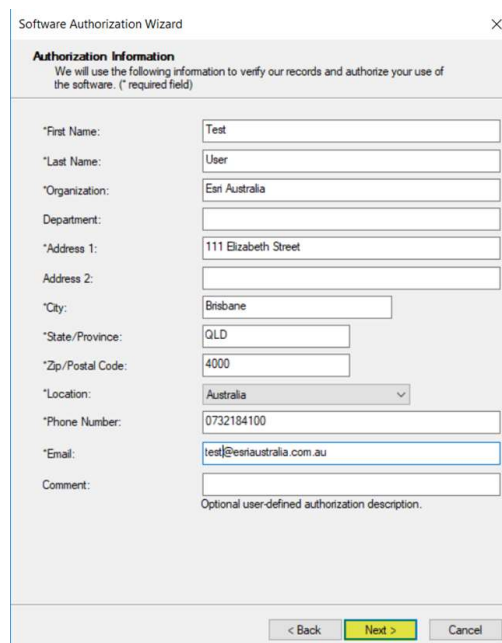
Buttons: < Back **Next >** Cancel

For the authorisation method choose "Authorize with Esri using the Internet" and choose "Next".



The screenshot shows the 'Software Authorization Wizard' window, specifically the 'Authorization Method' step. The window title is 'Software Authorization Wizard'. Below the title bar, the section is titled 'Authorization Method' with the instruction 'Select the method you want to use to authorize the software.' There are three radio button options: 1. 'Authorize with Esri now using the Internet. (This automatic method is the easiest way to authorize. It requires an Internet connection.)' - This option is selected and highlighted with a yellow background. 2. 'Authorize at Esri's website or by email to receive your authorization file.' 3. 'Authorize your software from a local license server.' At the bottom of the window, there are three buttons: '< Back', 'Next >' (highlighted in yellow), and 'Cancel'.

Complete the required fields with your personal information and your organisation details on the two the following page (these will be marked with an asterisk) and the choose "Next".



The screenshot shows the 'Software Authorization Wizard' window, specifically the 'Authorization Information' step. The window title is 'Software Authorization Wizard'. Below the title bar, the section is titled 'Authorization Information' with the instruction 'We will use the following information to verify our records and authorize your use of the software. (* required field)'. The form contains the following fields: *First Name: Test; *Last Name: User; *Organization: Esri Australia; Department: (empty); *Address 1: 111 Elizabeth Street; Address 2: (empty); *City: Brisbane; *State/Province: QLD; *Zip/Postal Code: 4000; *Location: Australia (dropdown menu); *Phone Number: 0732184100; *Email: test@esriaustralia.com.au; Comment: (empty). Below the comment field is the text 'Optional user-defined authorization description.' At the bottom of the window, there are three buttons: '< Back', 'Next >' (highlighted in yellow), and 'Cancel'.

Software Authorization Wizard

Authorization information (continued)
We will use the following information to verify our records and authorize your use of the software. (* required field)

*Your Organization: Commercial/Private Business

*Your Industry: GIS Services

*Yourself: Analyst/Researcher/Specialist

The personal information you supplied is protected under Esri's privacy policy. If you want to view Esri's privacy policy, click the View button below.

View...

< Back Next > Cancel

Where prompted enter your authorisation codes and the number of licenses that you wish to authorise in the fields provided and click "Next".

Software Authorization Wizard

Software Authorization Number
Enter the authorization number for your software product.

The authorization number consists of three letters and a series of numbers; similar to ABC123456789.

ArcGIS Desktop Advanced (Single Use)

ESU665641671

< Back Next > Cancel

In the software extensions panel choose the appropriate options based on whether you have extensions to authorise or not. If you do have extensions, apply the license code and number of licenses in the fields provided and choose "Next".



You will receive notification that the authorisation as completed and will list the features authorised. Click the "Finish" button to re-read the licenses.

