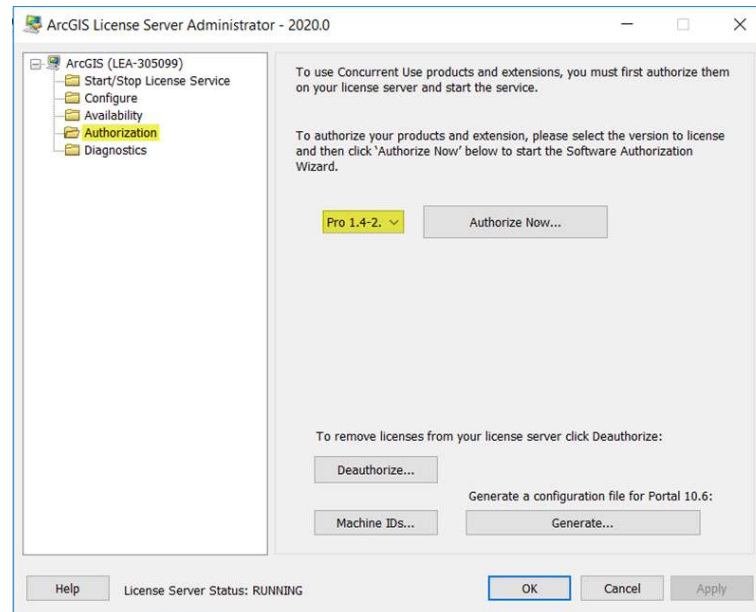


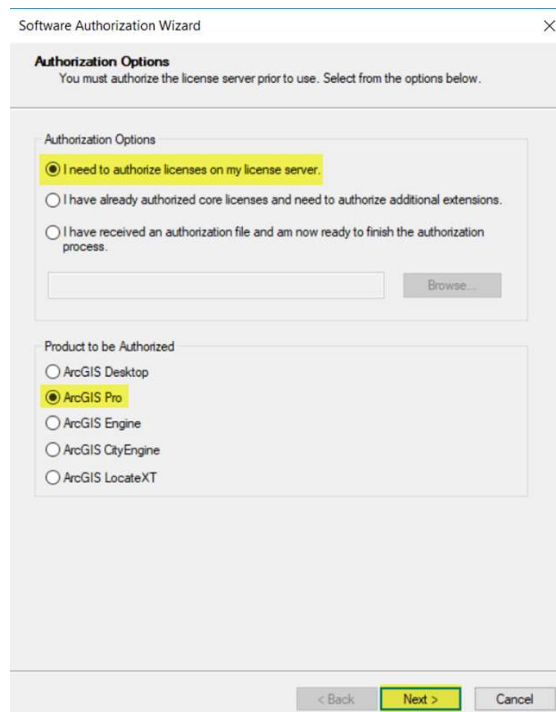


# Authorise ArcGIS Pro Concurrent Use Licenses Online

Open your ArcGIS License Server Administrator, navigate to the Authorisation folder and select ArcGIS Pro 1.4 - 2.6 from the drop-down menu and then select the "Authorise Now" button.



Select the option "I need to authorise licenses on my license server" and "ArcGIS Pro" from the panels as outlined below, then click "Next".



For the authorisation method choose Authorise with Esri using the Internet and choose "Next".

Complete the required fields with your personal information and your organisation details on the two the following page (these will be marked with an asterisk) and the choose "Next".

Software Authorization Wizard

**Authorization Information**  
We will use the following information to verify our records and authorize your use of the software. (\* required field)

\*First Name:

\*Last Name:

\*Organization:

Department:

\*Address 1:

Address 2:

\*City:

\*State/Province:

\*Zip/Postal Code:

\*Location:

\*Phone Number:

\*Email:

Comment:

Optional user-defined authorization description.

< Back **Next >** Cancel

Software Authorization Wizard

**Authorization information (continued)**  
We will use the following information to verify our records and authorize your use of the software. (\* required field)

\*Your Organization:

\*Your Industry:

\*Yourself:

The personal information you supplied is protected under Esri's privacy policy. If you want to view Esri's privacy policy, click the View button below.

< Back **Next >** Cancel

Where prompted enter your authorisation codes and the number of licenses that you wish to authorise in the fields provided and click "Next".

Software Authorization Wizard

**Software Authorization Number**  
Enter the authorization number for your software product.

The authorization number consists of three letters and a series of numbers, similar to ABC123456789.

ArcGIS Desktop Advanced	No. of Licenses
<input type="text" value="EFL123456789"/>	<input type="text" value="2"/>
<input type="text"/>	<input type="text"/>
<input type="text"/>	<input type="text"/>

< Back   **Next >**   Cancel

In the software extensions panel choose the appropriate options based on whether you have extensions to authorise or not. If you do have extensions, apply the license code and number of licenses in the fields provided and choose "Next".

Software Authorization Wizard

**Authorize Software Extensions**  
Please select an option below.

Options

I do not want to authorize any extensions at this time.

I have authorization number(s) to authorize one or more extensions.

Feature	Authorization Number	No. of Lice...
3D Analyst	EFL123456789	1
Spatial Analyst		
Network Analyst		
Publisher		
Data Interoperability		
Geostatistical Analyst		
Tracking Analyst		
Schematics		
Full Motion Video		
Workflow Manager		
Data Reviewer		

< Back   **Next >**   Cancel

You will receive notification that the authorisation as completed and will list the features authorised.

Click the "Finish" button to re-read the licenses.

